



# XM4-200/300 MX-200/300 Series

Cutter Quick Installation Guide

裁紙器快速安裝指南

裁紙器快速安裝指南

Guía de instalación rápida del cortador

Guia de instalação rápida de cortador

Guide d'installation rapide du cutter

Cutter Schnellinstallationsanleitung

Guida all'installazione rapida della taglierina

Kesici Hızlı Kurulum Kılavuzu

Panduan Instalasi Cepat Pemotong Kertas

Skärare Snabbinstallationsguide

커터 빠른 설치 가이드

Snelle installatiehandleiding schaar

Skrócona instrukcja montażu obcinarki

Инструкция по установке резака



Revision Date : April 2024

#### Note:

\*Except for the new full cutter, all the other cutters DO NOT cut on media with glue. For more details, please refer to the cutter specification in the user's manual.

\*Specifications, accessories, parts and programs are subject to change without notice.

#### Argox Information Co., Ltd.

8F., No. 28, Baogao Rd., Xindian Dist., New

Taipei City 231029, Taiwan (R.O.C.)

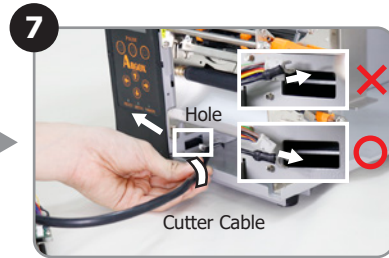
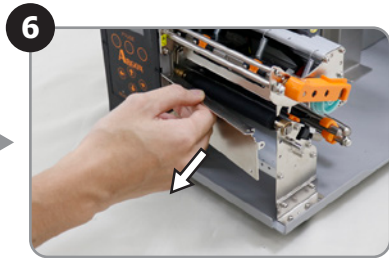
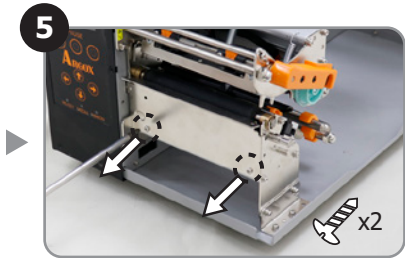
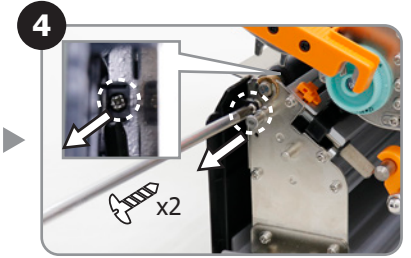
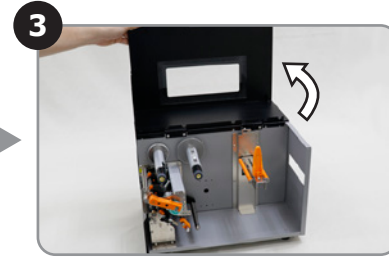
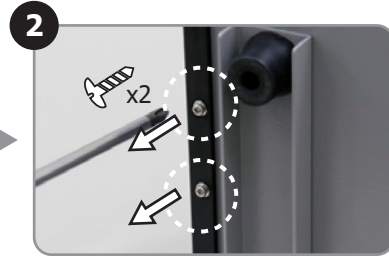
Tel: +886-2-8912-1121 Fax: +886-2-8912-1124

<https://www.argo.com>

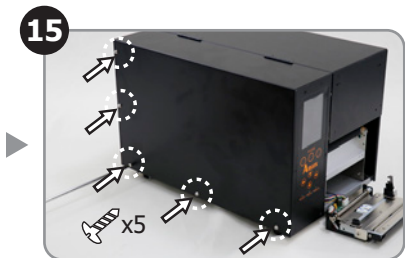
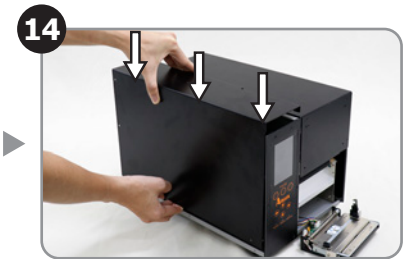
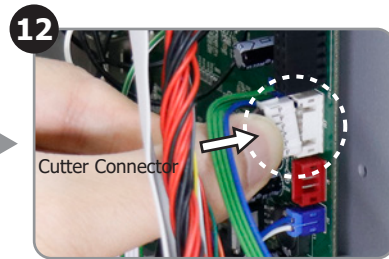
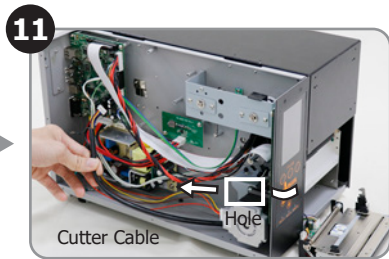
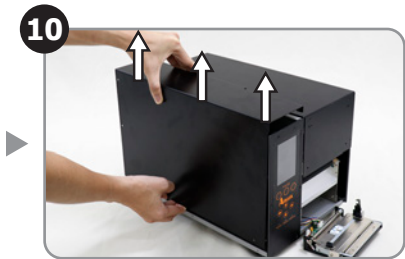
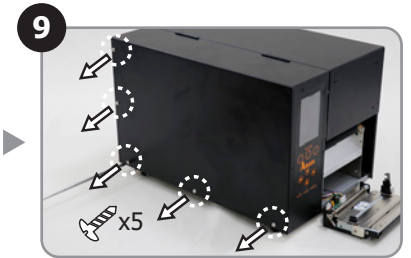
<https://www.youtube.com/user/argoxmkt>

Copyright © 2024. Argox Information Co., Ltd. All Rights Reserved.

START



※ Peeler cable also goes through this hole



※ Screw at the utmost left and right sides

